

SIS Digitisation Plan 2022–23

December 2022 update

This plan provides an update on the progress of digitisation projects for 2022-23

The original plan, as well as regular project updates, is available at anulib.anu.edu.au/digitisation

Completed in 2022

Maritime Union Australia



Approximately 10,000 photographs, negatives and slides relating to the Maritime Union of Australia (MUA), from the 1920s to 2000s.

The MUA formed in 1993 after the amalgamation of the Seamen's Union of Australia and the Waterside Workers' Federation, and is one of the largest and most active trade unions in Australia.

This material provides unique insight into the history of the MUA and its predecessors; visual documentation of activities, events and significant campaigns such as anti-Vietnam War protests and the infamous 1998 Patrick Dispute.

Adelaide Steamship Company



Approximately 1,000 photographs relating to the operations of the Adelaide Steamship Company, from 1913 to 1965.

The company formed in 1875 and was for many years the most successful shipping company in Australia.

This material provides insight into the operations of one of Australia's longest-running commercial and passenger shipping companies, and more broadly, the history of maritime industries in Australia in the late 19th to mid-20th centuries.

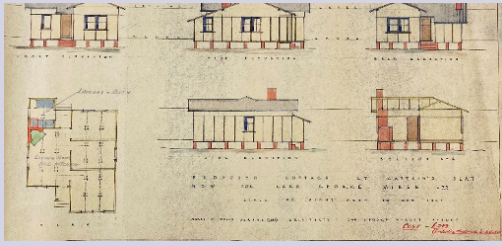
Australian National University: Design Unit Drawings and Photographs



Approximately 40 architectural drawings and 30 photographs of designs produced by the ANU Design Unit between the 1950s and 1970s.

The ANU Design Unit was established in 1954 to design and manufacture furniture for the University. Members included renowned designer Fred Ward, who oversaw campus planning, and furniture and interior design from 1954-1961; architect and designer Derek Wrigley; furniture designer Hans Pillig and interior designer Gerald Easden. Their design ethos spread across Canberra, with commissions for a range of Commonwealth agencies (including the National Capital Development Commission), community organisations and private individuals.

Lake George Mines: Maps and plans



Approximately 120 architectural maps and plans relating to Lake George Mines Pty Ltd, which operated, at Captains Flat New South Wales between 1892 and 1962.

The company was one of the largest and most significant metal mining operations in Australia, and key producers of lead, silver, zinc, sulphur, copper and gold.

These maps and plans provide insight into the Company's operations, as well as documentation of the development of Captains Flat, one of Australia's most important mining sites.

Squires Brewery Ledger



The ledger of Squire's Brewery from 1828-29, established by First Fleet convict James Squire in Sydney in the early 1800s.

Squire is widely considered to be one of the earliest, if not the first, to brew beer in the new colony and the first to successfully cultivate the hop plant.

This ledger is a rare surviving record that provides insight into the operations of Australia's first commercial brewery, and includes the names of many prominent early European settlers of the greater Sydney region.

Started, to be completed in 2023

Colonial Sugar Refining Company: Photographs



Approximately 30,000 photographs relating to the operations of the Colonial Sugar Refining Company (CSR) in Australia and the Pacific during the 19th and 20th centuries.

CSR formed in 1855 and is one of Australia's oldest and most successful companies.

These items have been carefully selected from the many thousands of CSR records, as those that will benefit most from having ongoing access and bring the most value to researchers.

NARU Theses

Approximately 250 theses relating to the research carried out by the North Australia Research Unit (NARU). Digitisation will allow for promotion and dissemination of this valuable research which was previously inaccessible to the public.

NARU was established in 1973 to specialise in research in northern Australia and to provide a base and logistic support for the University and other institutions undertaking research in northern Australia.

Australian Bureau of Statistics Historical Microfiche collection

A suite of ABS historical demographic information, including Commonwealth microfiche: 1901 to 1990 (cumulated set), 1991 to 1993 (annual sets); and each state and territory microfiche: 1984 to 1989 (cumulated set), and 1990 to 1993 (annual sets).

The physical materials were lost in the 2018 Chifley flooding incident, and the information is not currently available in a digital format.

Asia Pacific Map Collection

Over 35,000 Asia Pacific maps, including topographic; cadastral; aeronautical; bathymetric; thematic; and tourist maps. It is uniquely positioned as a hub for researchers.

These maps will be valuable to a range of researchers, and could enhance the use of other ANU collections. Digitisation of maps will facilitate greater research, as they can be more effectively delivered to researchers through searchable collections.

To commence in 2023

ANU AV Preservation Project

The ANU AV Preservation Project will digitise and make available at-risk audio-visual material held in the ANU Library, ANU Archives and Noel Butlin Archives including unique recordings of eminent academics, indigenous material, and business and trade union films, and will also replace materials lost in the 2018 Chifley Library Flood.

Indigenous Audio-Visual Materials

48 Indigenous audio-visual materials held by the ANU Library in obsolete and ageing formats.

Digitisation of this material would preserve this invaluable First Nations content and ensure they are accessible to current and future researchers.

Dr Ian Maddocks: Pari Photographs

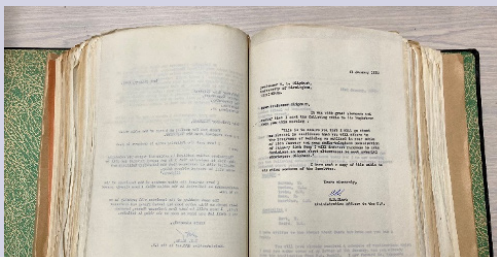


Approximately 1,000 photographs taken by Dr Ian Maddocks during his time living and working in Pari, Papua New Guinea in the 1960s and 1970s.

Dr Maddocks and his wife Diana ran a village clinic in Pari, with Dr Maddocks also serving as Dean of Medicine at the University of Papua New Guinea. During his time in Pari, Dr Maddocks amassed a large amount of research about the local people and culture, including material on Pari anthropology, history, linguistics and theology. He also collected a significant amount of health data and genealogical information.

This material provides a unique record of Pari people and culture, and digitisation will aid accessibility to the records by the Pari community.

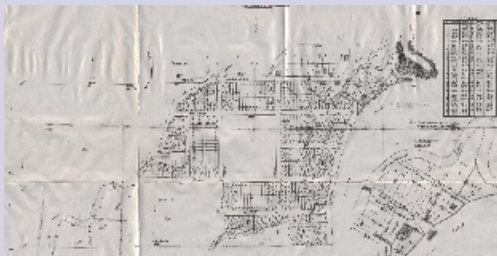
Australian National University: London Office Correspondence



Over 1,000 pages of correspondence produced by the University's London Office between 1949 and 1953, including letters and cables sent by London-based administrative staff to staff in Canberra and members of the Academic Advisory Council based in the UK.

These records provide insight into the history and development of the University in its formative years, particularly the recruitment of the first members of staff. The records also provide a short history of the London Office of the University, which operated between 1949 and 1953.

Colonial Sugar Refining Company: Staff Records



Approximately 3,000 staff records relating to the operations of the Colonial Sugar Refining Company (CSR) in Australia and the Pacific during the 19th and 20th centuries.

CSR formed in 1855 and is one of Australia's oldest and most successful companies.

These items have been carefully selected from the many thousands of CSR records, as those that will benefit most from having ongoing access and bring the most value to researchers.

Amirah Inglis: Australians in the Spanish Civil War



Approximately 300 items relating to Australians in the Spanish Civil War, compiled by Amirah Inglis in the 1980s while researching and writing her book *Australians in the Spanish Civil War*.

The collection includes: research notes; newspaper cuttings; correspondence with nurses who served in Spain; photographs; and cassette tapes of interviews with Australians and Britons who served in Spain.

Australians' involvement in the Spanish Civil War is not well known these days and digitising these records will improve Australians' understanding of this event which has parallels in the modern era.

James Normington Rawling and Phil Thorne Collection



Two collections of 2,500 rare pamphlets, photographs and ephemera about Australian and international politics. Subjects include depression era evictions and riots; Australians in the Spanish Civil War; conscription; communism; socialism; labour history; and Australian involvement in WWI and WWII.

Socialism and communism are always popular research topics and these items will enhance researchers' ability to study the topic in more depth, particularly from an Australian perspective.

Parliamentary Publications

A collection of Parliamentary publications, including volumes from Parliamentary handbooks; the Senate; and the House of Representatives. This collection was stored in the J.B. Chifley Library, and were consequently destroyed in the 2018 flood.

Diana Howlett: Pacific Slides

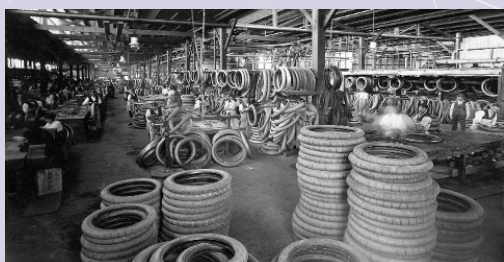


750 colour slides produced by geographer Professor Diana Howlett during her fieldwork in Papua New Guinea, Fiji, Kiribati, Tonga, Samoa, Tuvalu, Cook Islands and Solomon Islands between the 1950s and 1980s.

Professor Diana Howlett completed her PhD in Geography in 1959, was a Professor of Geography at the University from 1982-1996, and appointed to Chair before her retirement. Her research provides significant insight into the human geography of the Pacific Region, particularly Papua New Guinea.

The slides provide visual documentation of the people and landscape of the Pacific Region, with a focus on agriculture and economic development.

Dunlop Rubber Company Australia: Photographs



300 photographs relating to the Dunlop Rubber Company of Australia, from 1900 to 1950.

Dunlop Rubber Company was established in Melbourne in 1893, and became one of the most recognisable Australian companies during the 20th century. Its products were particularly prominent in the motor industry and a variety of sports.

These photographs provide insight into the Company as well as early Australian sporting events, including the first motor Grand Prix held in Australia.

Mount Stromlo and Siding Springs: Slides



500 colour and black & white slides relating to the Mount Stromlo and Siding Spring Observatories from the 1960s to 1980s.

These slides relate to the buildings, staff and equipment as well as observations of astronomical objects. They provide insight into the history of the University's Research School of Astronomy and Astrophysics and the work conducted at the observatories.

Tolai Genealogies

10 volumes of genealogies, prepared in Papua New Guinea during the 1960s by the Land Titles Commission (LTC). The LTC was a semi-judicial body set up by the Australian colonial authorities with responsibility for adjudicating on land claims.

Land tenure in PNG is closely related to kinship and, to inform its work in the territory of the Tolai people of East New Britain, LTC field staff carried out the laborious job of collating genealogies, showing the (matrilineal) descent of the kinship groups (vunatarai) into which their society is divided. In many cases, these genealogies run to six or seven generations in depth, and contain many dozens of named individuals.

They are a unique record, containing births, deaths and marriages data spanning more than a century, much of which would be difficult if not impossible to reproduce today. They are not only a valuable historical record, but also of immense significance to the Tolai people themselves.

Pre-Federation Journals

The ANU Library holds several important Pre-Federation journals relating to Australia in the print collection. Some of these journals have been digitised in full or in part by other organisations and universities, but the collection is not complete in a digital form.

This project aims to digitise the missing volumes in this set, and collaborate with other universities and organisations to bring the entire collection together in one centralised portal. It endeavours to build connections in the content using a web-based platform, which could include aspects such as mapping and text mining to create linkages with relevant online resources.

Digitising these journals and making them accessible through one central portal will provide a valuable resource for researchers across a variety of disciplines.